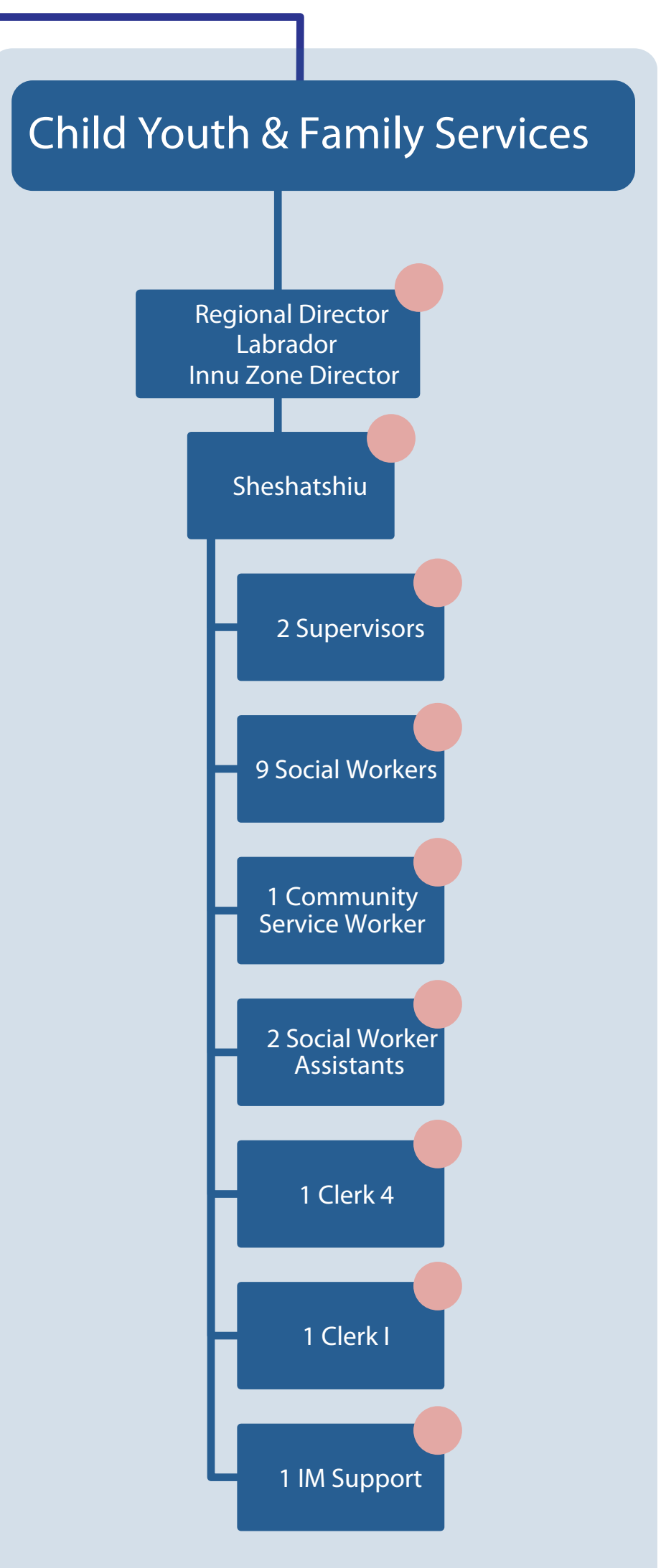
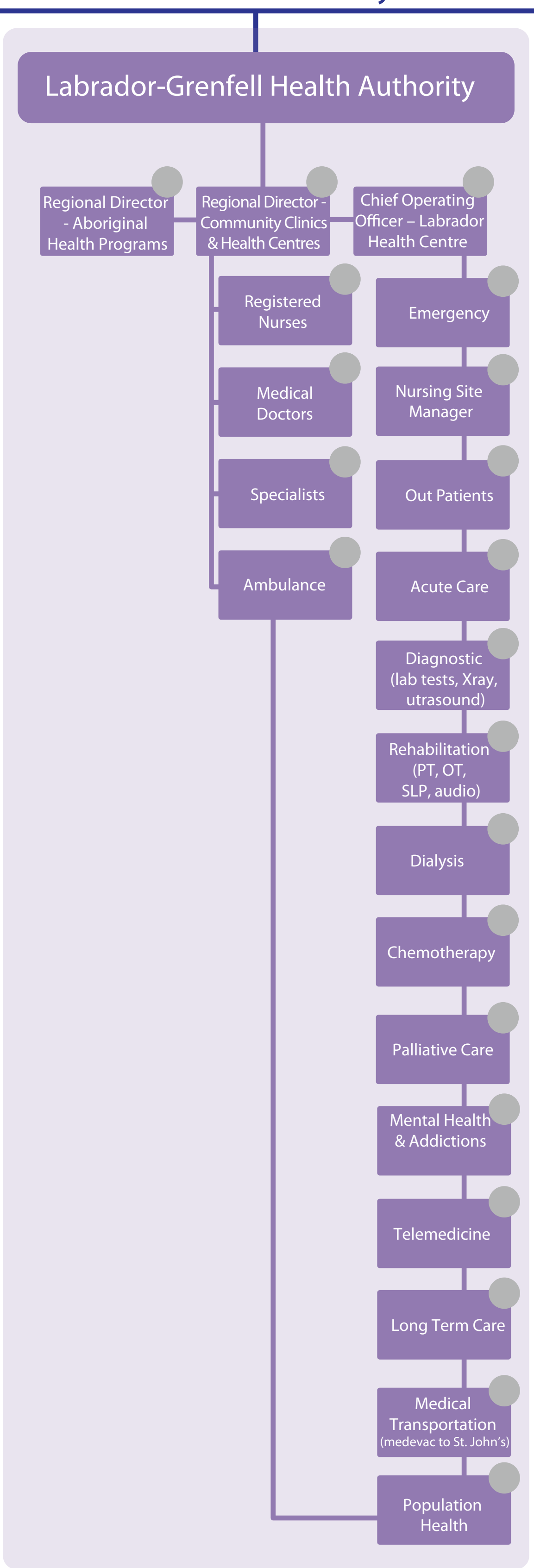
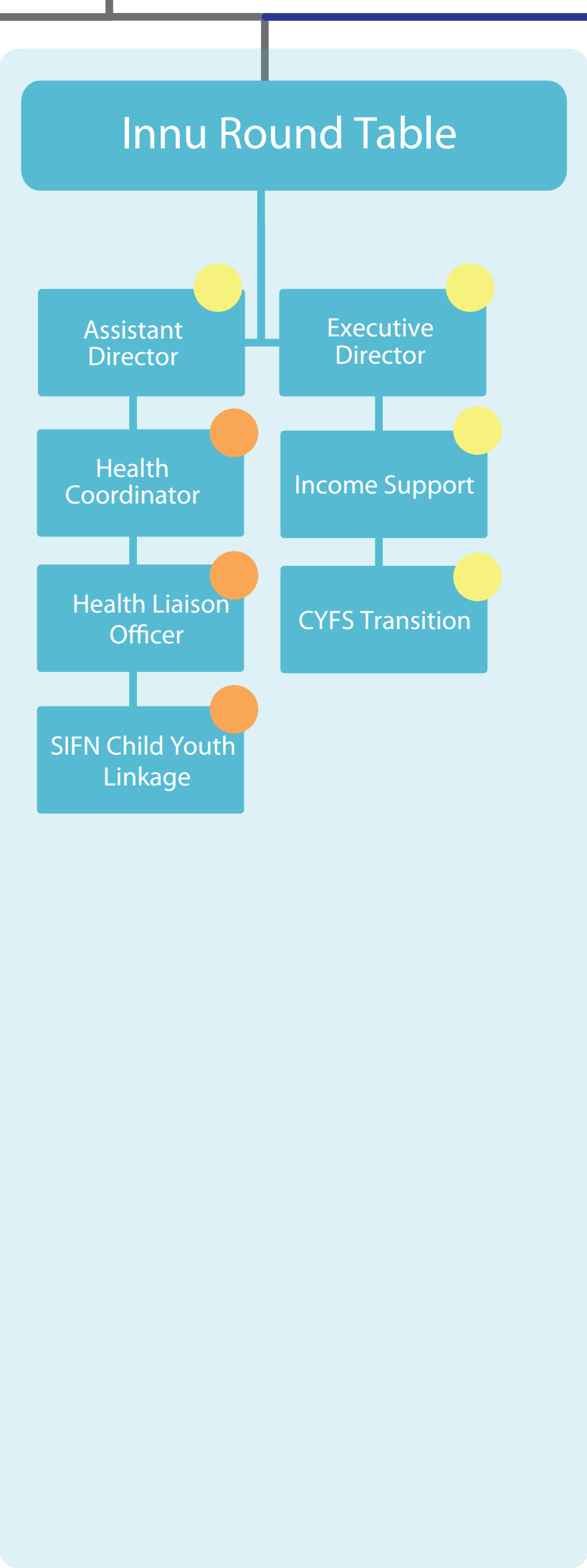
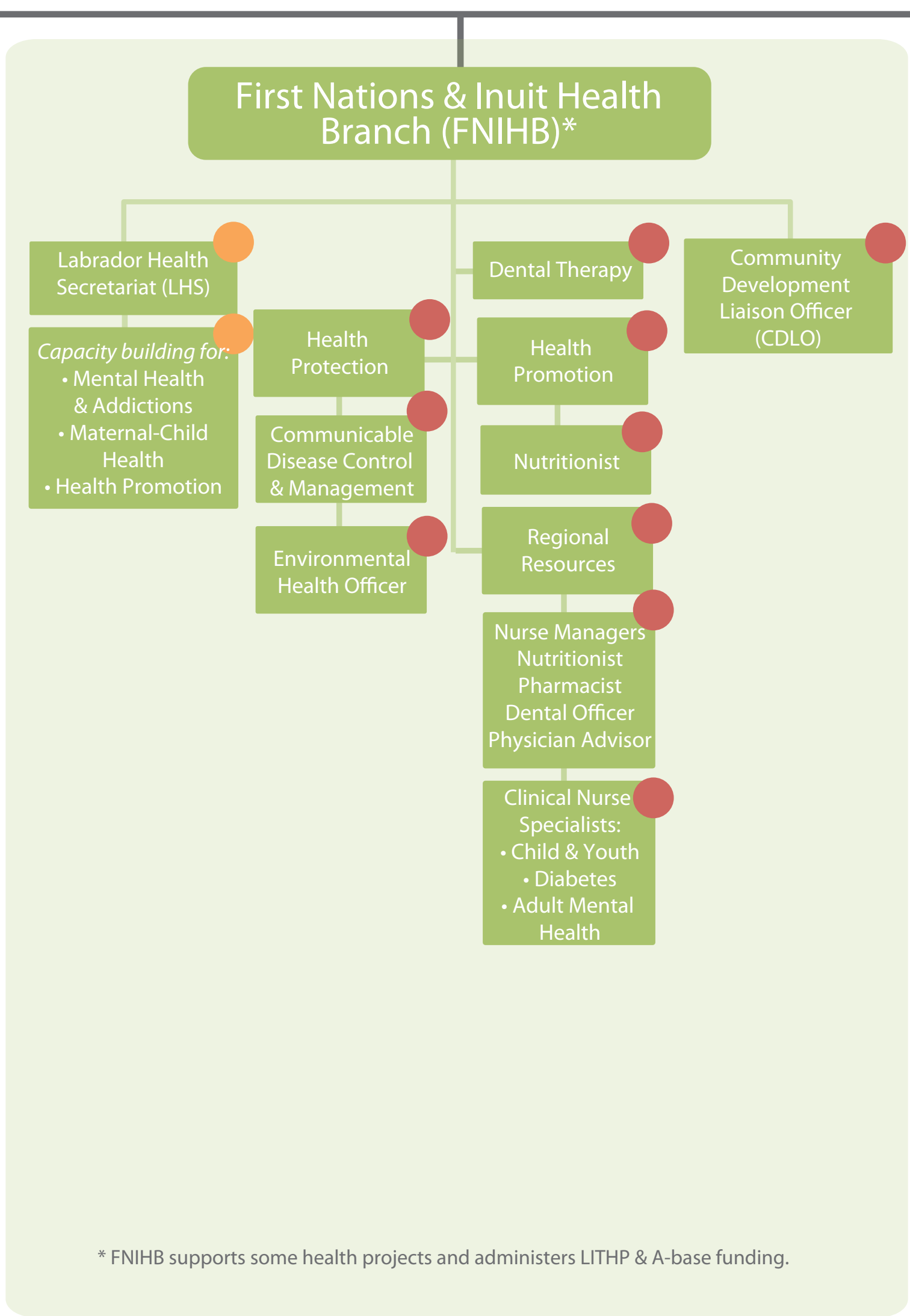
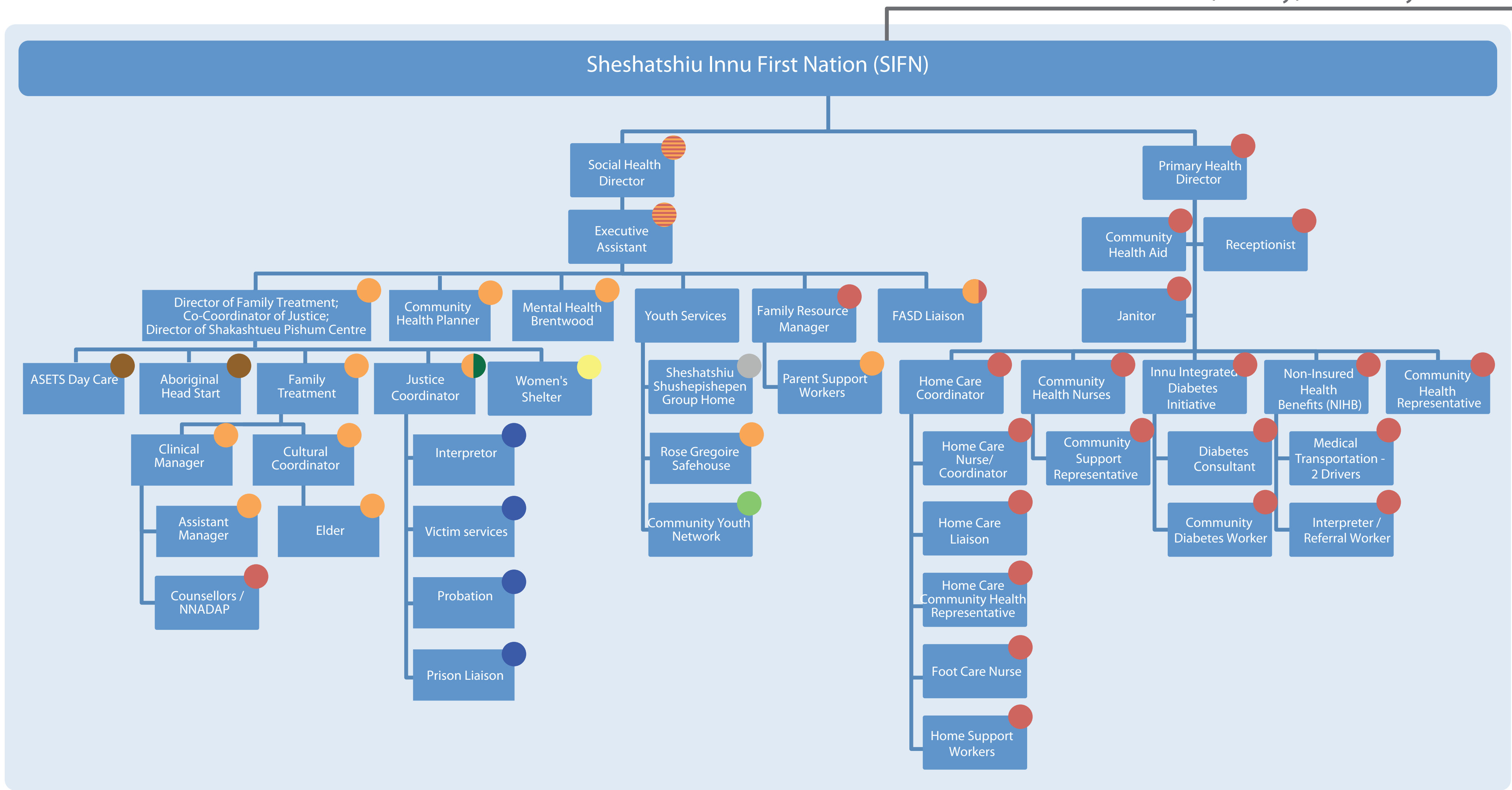


# Sheshatshiu Innu Health & Healing Services

(Mostly) Federally Funded

Provincially Funded



## Program Funding Colour Codes

- Aboriginal Affairs & Northern Development (AANDC)
- Labrador Innu Targeted Health Program (LITHP) funding
- A-Base funding Health Canada
- NL Department of Health & Community Services (H&CS)
- NL Department of Child, Youth & Family Services (CYFS)
- NL Department of Human Resources, Labour & Employment (HRLE)
- 10% of program funding sources
- NL Department of Justice
- Innu Trust
- Public Health Agency of Canada (PHAC)



Health Canada

Santé Canada



Note: Positions, vacancies, and resources change frequently for CYFS in Natuashish and Sheshatshiu.